

PROVIDING WEATHER GUIDANCE FOR
COMMODITY TRADING

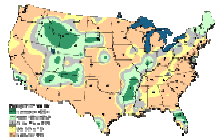
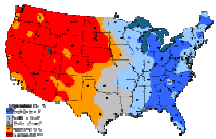
GLOBAL WEATHER AND COMMODITY RESEARCH US ENERGY

Issued: March 5, 2008
Vol. 2 No. 8

LAST WEEK vs LAST YEAR
FEB 24-MAR 1, 2008 vs FEB 25-MAR 3, 2007

Temperature TY-LY

Precipitation TY-LY

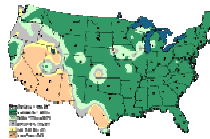
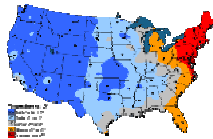


ACTUAL

THIS WEEK vs LAST YEAR
MAR 2-8, 2008

Temperature TY-LY

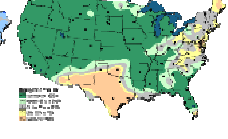
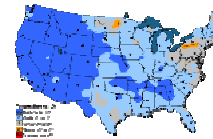
Precipitation TY-LY



NEXT WEEK vs LAST YEAR
MAR 9-15, 2008

Temperature TY-LY

Precipitation TY-LY



■ Much Colder < -7° ■ Colder -2° to -6° ■ Similar -1° to +1° ■ Warmer +2° to +6° ■ Much Warmer > +7°
■ Much Wetter >200% ■ Wetter 125% to 200% ■ Similar 75% to 125% ■ Drier 50% to 75% ■ Much Drier < 50%

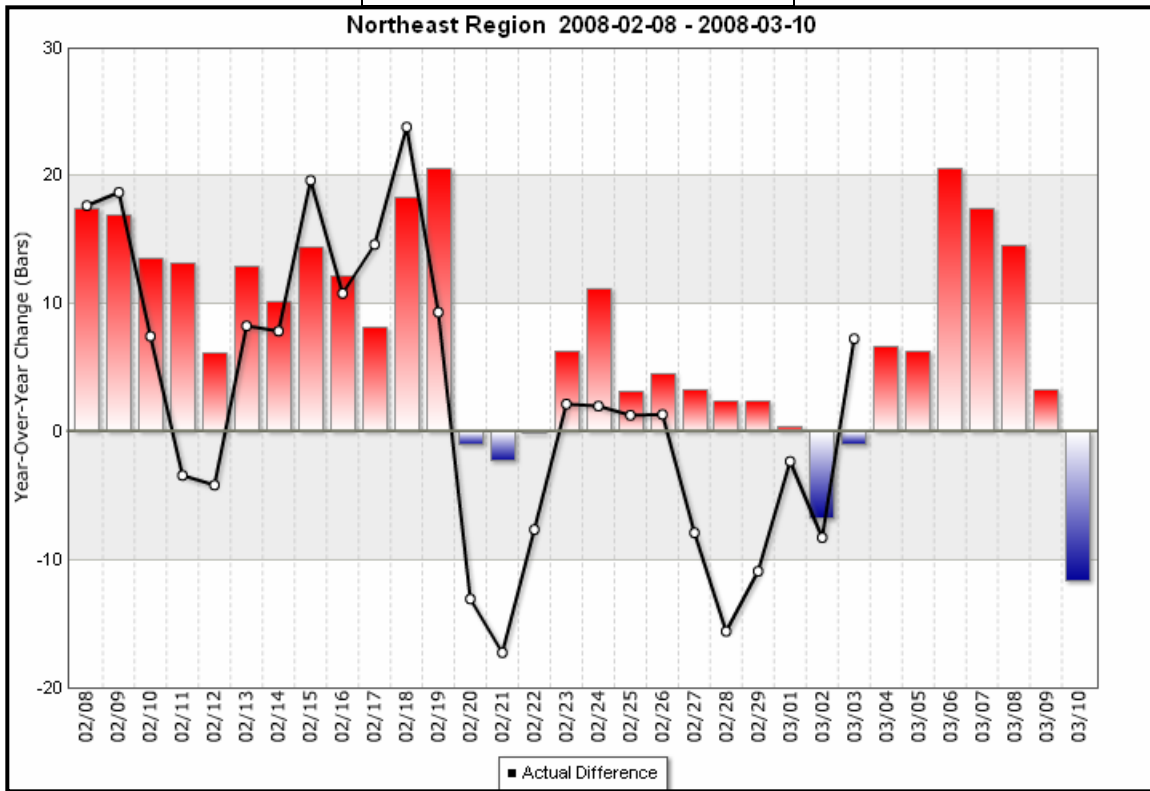
A cool week in the northeast last week kept energy demand firm for late February. Many eastern cities saw evening temperatures drop into the teens between Thursday and Saturday evening, providing support for stronger energy demand requirements at the end of February. Average daily temperatures for numerous northeast high demand population centers were between 14° and 17° F below normal. Looking ahead, demand in the east will be lighter this week through with the warmest days falling on the 4th/5th of March; the mild pattern will transition by the weekend. This Tuesday's daytime temperatures will be in the mid 50s, then the daytime highs will slowly decrease by the end of the week. Beyond Tuesday of this week, it won't get as warm in the midwest, as a cold air mass from western Canada starts to move in by mid week. The pattern is setting up for next week to be cooler accompanied by some snow in the east as the Arctic and North Atlantic Oscillations (AO/NAO) are trending towards negative phase; the strongest demand looks to start this Saturday into Sunday in the midwest, and Sunday into Monday (9th/10th March) in the east as the cold system moves across the northern tier of the country. As we discussed last week, peak energy demand for the month will fall right around the 7th and 8th of March for the upper midwest, and the 9th and 10th for cities in the east. April crude oil has come down off of its highs of just under \$104/barrel, and is now trading right around \$100 at the time of this writing. Next week's pattern may provide some more support for trading to continue at or above \$100 as late season heating demand in mid March looks to be higher than the demand seen this time last year. Refer to the table below for the Weather Trends International March and April HDD estimates for the 18 CME cities. As we turn our attention to summer 2008, subscribers to the Weather Trends commodity reports should now be referring to our long range outlook to start anticipating market behavior and associated positions for the summer months.

City	FORECAST	Mar-07	Temperature	FORECAST	HDD	FORECAST	Apr-07	Temperature	FORECAST	HDD
	Average Mar-08 Temperature (F)	Temperature (F)	Change from Last Year (F)	Mar-08 HDD	Change from Last Year	Average Apr-08 Temperature (F)	Temperature (F)	Change from Last Year (F)	Apr-08 HDD	Change from Last Year
Atlanta	56.0	60.2	-4.2	281	87	60.7	60.3	0.4	131	-46
Chicago	36.8	42.5	-5.7	875	171	48.5	46.8	1.7	495	-55
Cincinnati	44.0	49.7	-5.7	652	166	54.6	51.8	2.8	311	-90
New York	43.7	42.0	1.7	660	-53	52.9	50.4	2.5	364	-80
Dallas	58.3	64.4	-6.1	219	118	66.0	63.1	2.9	35	-101
Philadelphia	45.7	43.7	2.0	598	-64	53.7	50.8	2.9	338	-96
Portland	47.1	50.1	-3.0	556	95	52.0	51.7	0.3	389	-11
Tucson	60.9	63.0	-2.1	130	-6	66.3	68.5	-2.2	32	-6
Des Moines	36.6	45.2	-8.6	882	255	50.6	49.0	1.6	431	-67
Las Vegas	58.8	64.4	-5.6	193	87	66.0	70.5	-4.5	29	-9
Boston	39.6	37.4	2.2	789	-66	48.9	45.0	3.9	483	-123
Houston	62.7	65.9	-3.2	118	41	68.6	66.7	1.9	13	-55
Kansas City	42.3	52.6	-10.3	704	303	53.7	51.9	1.8	340	-72
Minneapolis	28.4	38.4	-10.0	1135	309	45.8	47.2	-1.4	577	31
Sacramento	53.7	57.6	-3.9	351	119	59.0	60.0	-1.0	180	11
Baltimore	45.9	45.1	0.8	592	-25	53.7	51.4	2.3	339	-76
Salt Lake City	42.1	46.3	-4.2	711	130	49.5	52.5	-3.0	464	79
Detroit	36.7	40.1	-3.4	877	105	48.7	47.7	1.0	489	-33

30 DAY TEMPERATURE SUMMARY

NORTHEAST

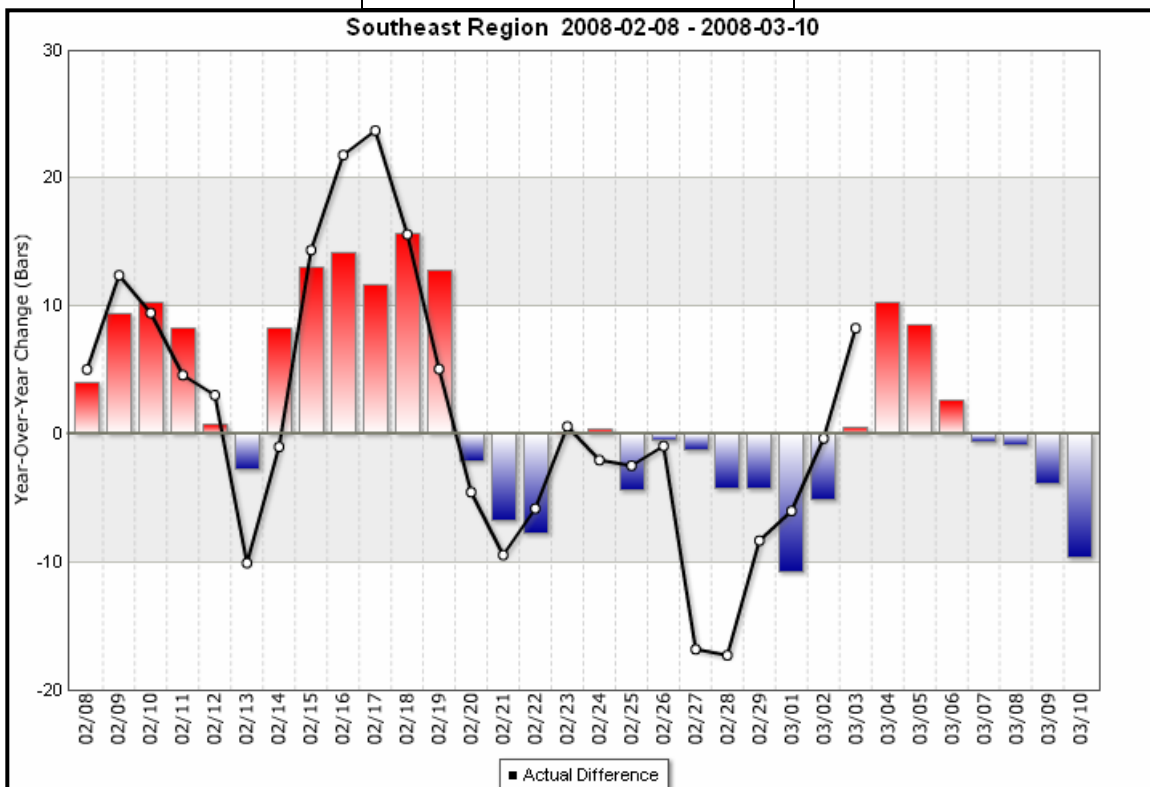
VERIFICATION: 72%



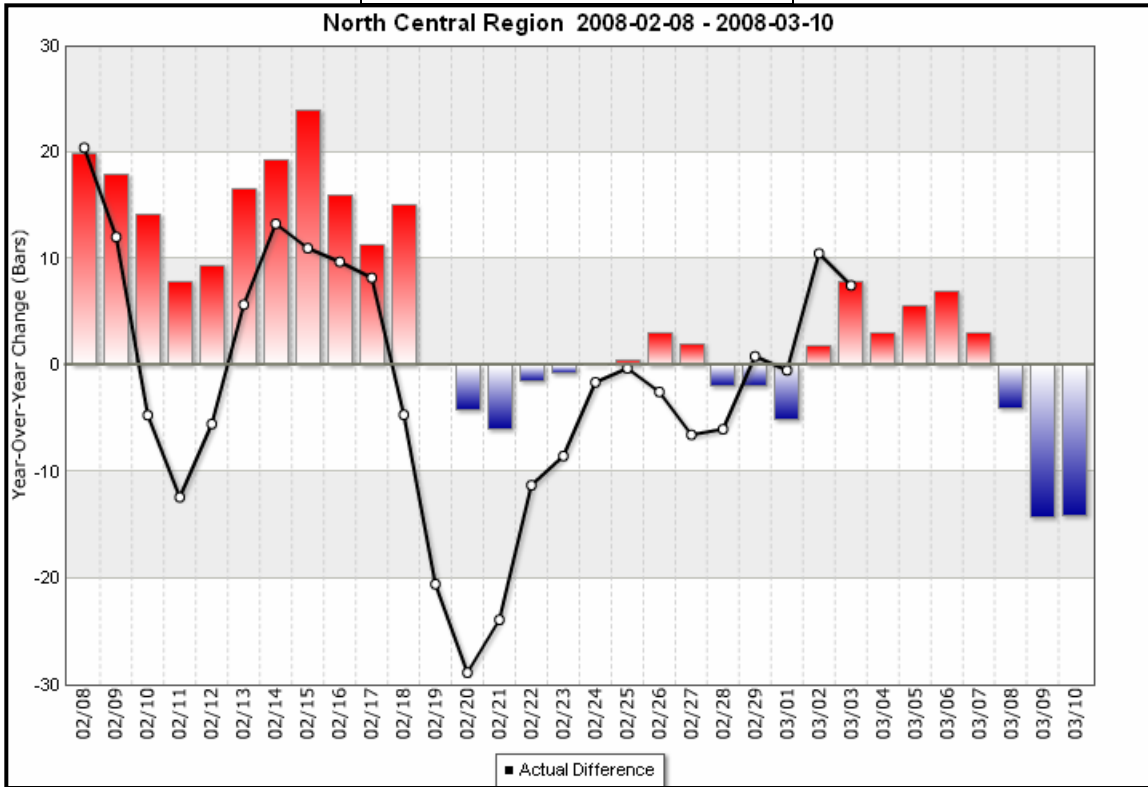
30 DAY TEMPERATURE SUMMARY

SOUTHEAST

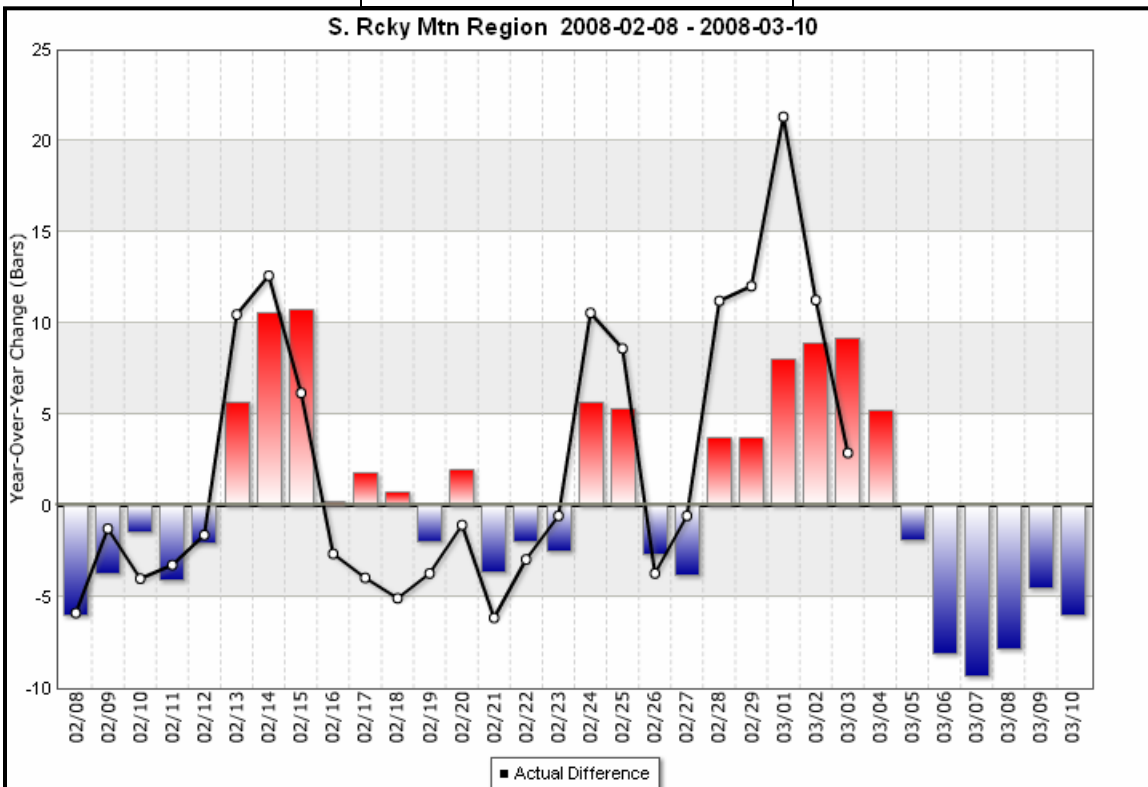
VERIFICATION: 92%



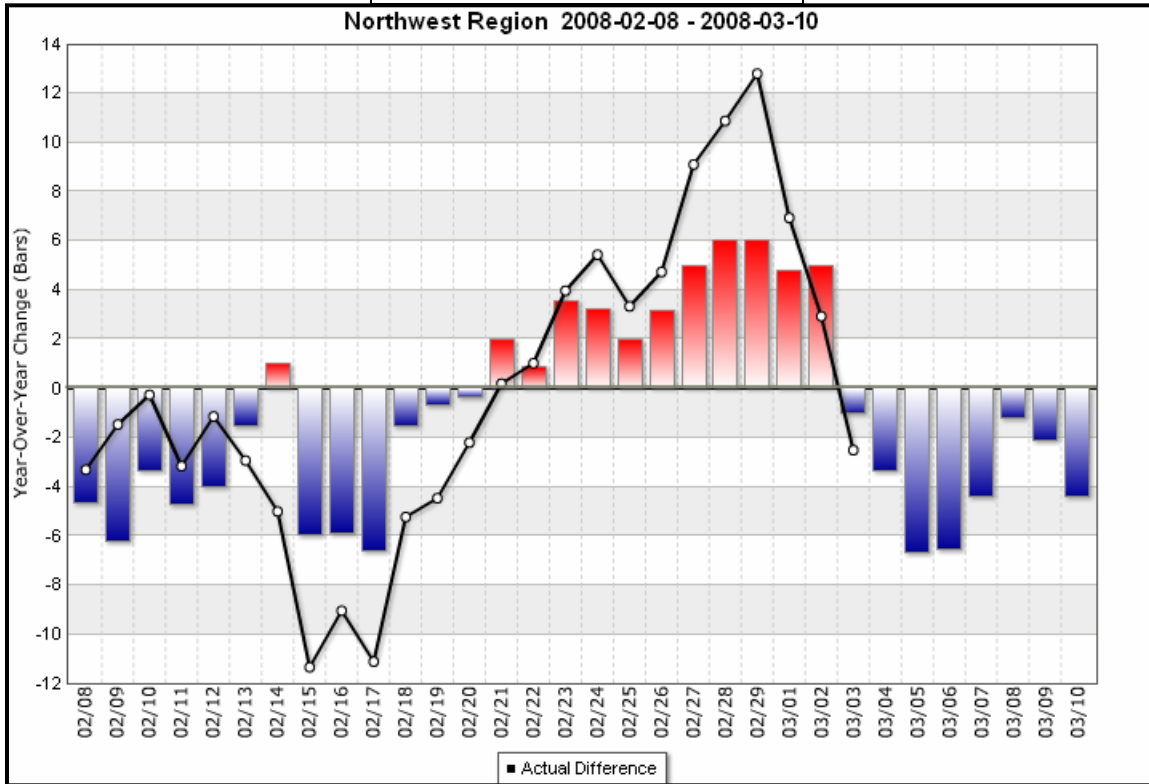
30 DAY TEMPERATURE SUMMARY
NORTH CENTRAL
 VERIFICATION: 64%



30 DAY TEMPERATURE SUMMARY
SOUTHERN ROCKIES
 VERIFICATION: 84%



30 DAY TEMPERATURE SUMMARY
NORTHWEST
 VERIFICATION: 96%



30 DAY TEMPERATURE SUMMARY
SOUTHWEST
 VERIFICATION: 96%

