

PROVIDING WEATHER GUIDANCE FOR  
**COMMODITY TRADING**

## GLOBAL WEATHER AND COMMODITY RESEARCH US ENERGY

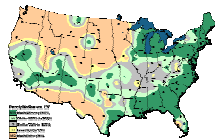
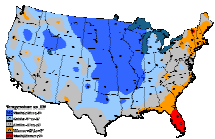
Issued: February 27, 2008  
Vol. 2 No. 7

### LAST WEEK vs LAST YEAR

FEB 17-23, 2008 vs FEB 18-24, 2007

Temperature TY-LY

Precipitation TY-LY

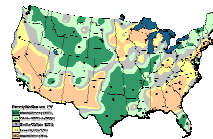
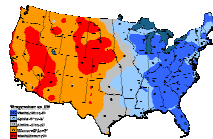


### THIS WEEK vs LAST YEAR

FEB 24-MAR 1, 2008

Temperature TY-LY

Precipitation TY-LY

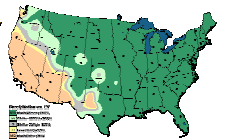
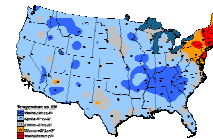


### NEXT WEEK vs LAST YEAR

MAR 2-8, 2008

Temperature TY-LY

Precipitation TY-LY



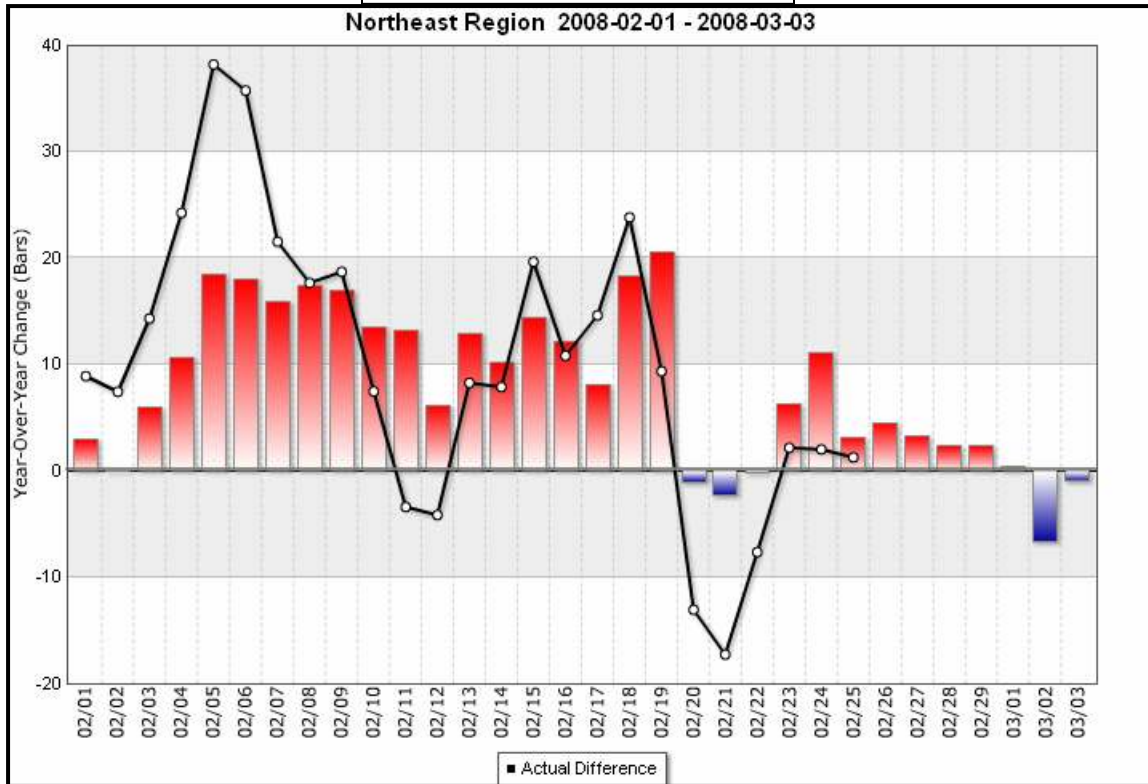
- |                     |                       |                        |                     |                     |
|---------------------|-----------------------|------------------------|---------------------|---------------------|
| ■ Much Colder <-7°  | ■ Colder -2° to -6°   | ■ Similar -1° to +1°   | ■ Warmer +2° to +6° | ■ Much Warmer > +7° |
| ■ Much Wetter >200% | ■ Wetter 125% to 200% | ■ Similar 75% to 125 % | ■ Drier 50% to 75%  | ■ Much Drier < 50%  |

Energy demand last week was supported by a brief but intense Arctic blast that brought cold temperatures into the upper midwest and to a lesser extent in the east. Minneapolis and Chicago saw temperatures on Tuesday and Wednesday that were between 17 and 19 degrees below normal. Eastern cities has a mixed week with a very mild start (Monday's high temperature in Boston was 62), then transitioning to a cool second half of the week. Despite these extremes in both directions which have included many days where the average temperatures have been significantly below normal, the warm days have been the dominant feature, and many cities have experienced a February that has been much warmer than last year; the HDD chart below highlights the danger in planning energy demand requirements off of last year. As we look towards transitioning to March, a change in the pattern is likely for high demand regions. There looks to be a brief weakness in the Arctic and North Atlantic Oscillations (AO/NAO), which have been in positive (warm) phase for an extended period of time; this weakness will allow some cooler Arctic air to move in and bring overnight temperatures from Boston to New York into the teens Thursday and Friday. A brief warming from Chicago to the east will move in next Sunday and Monday, then another extended period of colder temperatures an higher demand will be the dominant feature through mid March. Peak demand will be around the 7<sup>th</sup>/8<sup>th</sup> of March for the Chicago area, and the 9<sup>th</sup>.10<sup>th</sup> in the east. With oil now trading above \$100 and all of the speculative money pouring into the energy complex, projecting futures prices over the next few weeks can be increasingly unpredictable, and this cold snap (which we discussed last week for March week 2) can serve to support the higher short term volatility. Refer to the chart below for Weather Trends Int'l February and March HDD estimates for the 18 CME cities.

City	FORECAST	Feb-07	Temperature	FORECAST	HDD	FORECAST	Mar-07	Temperature	FORECAST	HDD
	Average Feb-08 Temperature (F)	Temperature (F)	Change from Last Year (F)	Feb-08 HDD	Change from Last Year	Average Mar-08 Temperature (F)	Temperature (F)	Change from Last Year (F)	Mar-08 HDD	Change from Last Year
Atlanta	48.6	45.7	2.9	477	-83	53.6	60.2	-6.6	352	158
Chicago	23.2	18.4	4.8	1213	-139	36.6	42.5	-5.9	880	176
Cincinnati	33.4	23.9	9.5	916	-278	43.1	49.7	-6.6	679	193
New York	36.3	29.6	6.7	832	-196	42.3	42.0	0.3	705	-8
Dallas	53.6	50.6	3.0	344	-85	58.5	64.4	-5.9	204	103
Philadelphia	37.2	28.3	8.9	806	-259	43.7	43.7	0.0	662	0
Portland	44.6	44.1	0.5	593	-15	47.9	50.1	-2.2	530	68
Tucson	55.1	55.2	-0.1	288	4	61.9	63.0	-1.1	97	-38
Des Moines	19.8	19.1	0.7	1310	-22	38.9	45.2	-6.3	808	182
Las Vegas	52.5	54.4	-1.9	363	55	60.7	64.4	-3.7	134	28
Boston	33.1	26.5	6.6	927	-191	38.8	37.4	1.4	811	-44
Houston	60.0	55.6	4.4	175	-119	61.8	65.9	-4.1	121	44
Kansas City	28.1	28.9	-0.8	1072	24	43.2	52.6	-9.4	675	274
Minneapolis	15.2	14.1	1.1	1444	-32	30.7	36.4	-7.7	1063	237
Sacramento	49.0	50.4	-1.4	464	41	55.7	57.6	-1.9	287	55
Baltimore	37.5	29.4	8.1	798	-235	43.8	45.1	-1.3	657	41
Salt Lake City	33.0	36.4	-3.4	928	99	43.8	46.3	-2.5	657	76
Detroit	25.4	19.9	5.5	1147	-161	35.8	40.1	-4.3	905	133

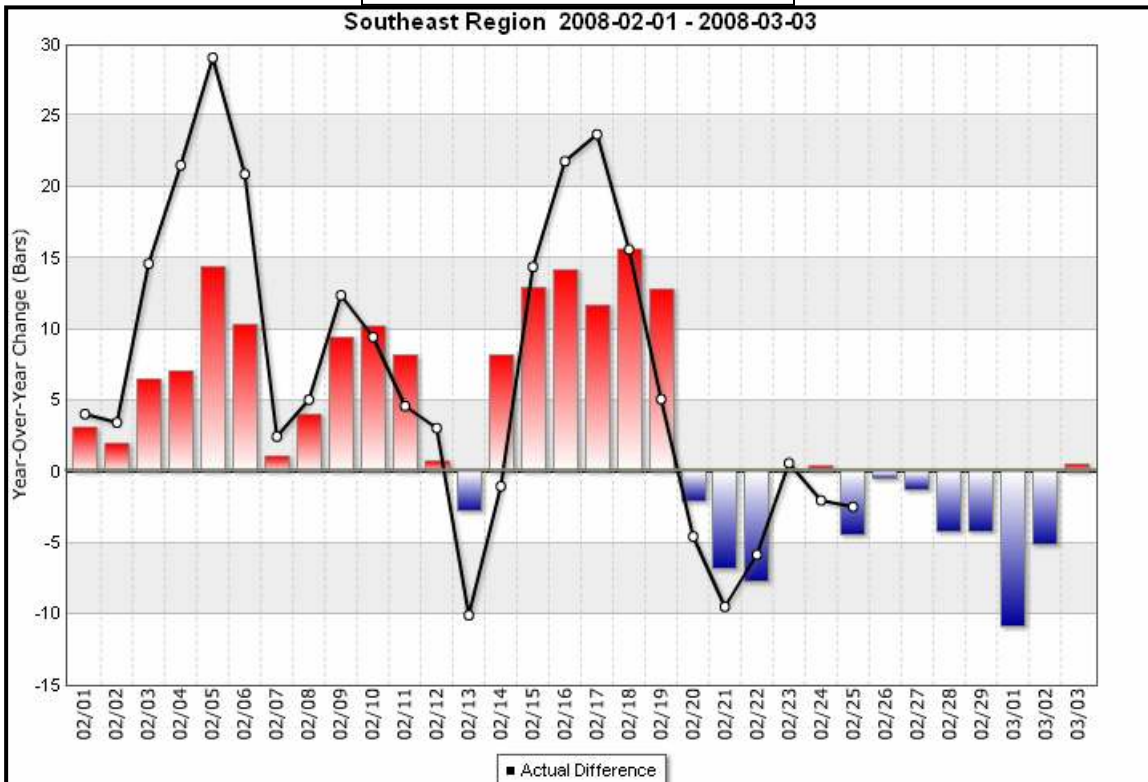
30 DAY TEMPERATURE SUMMARY

NORTHEAST

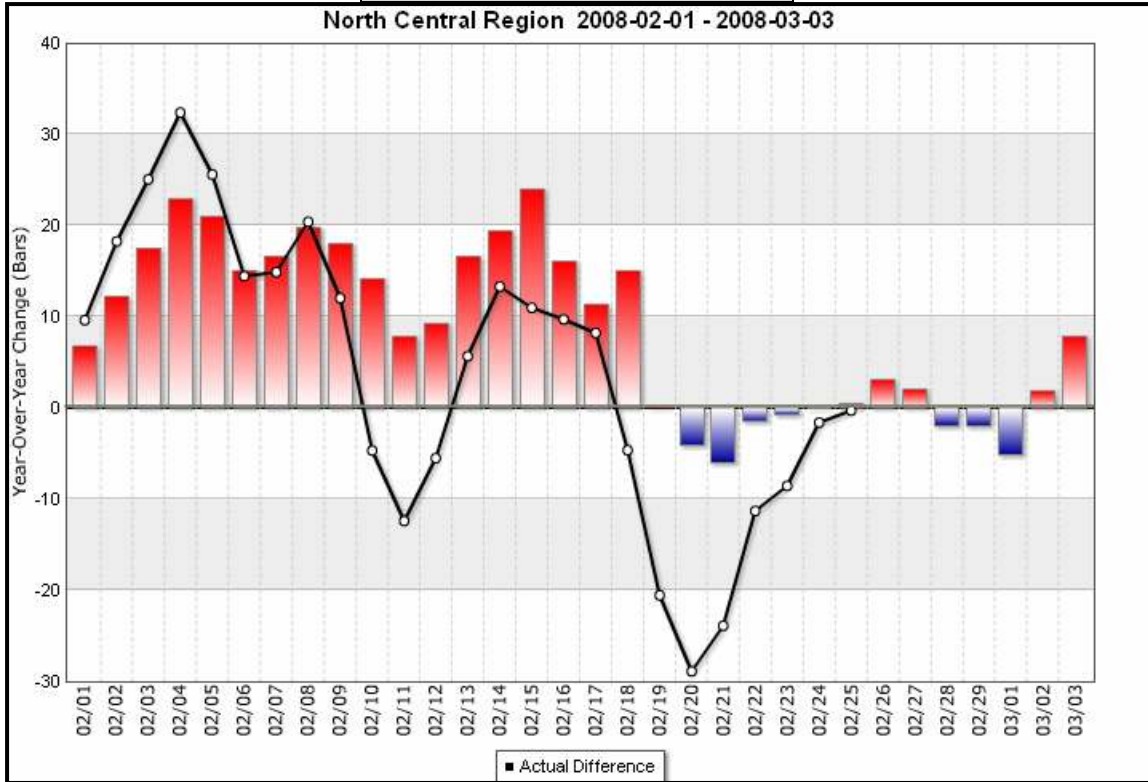


30 DAY TEMPERATURE SUMMARY

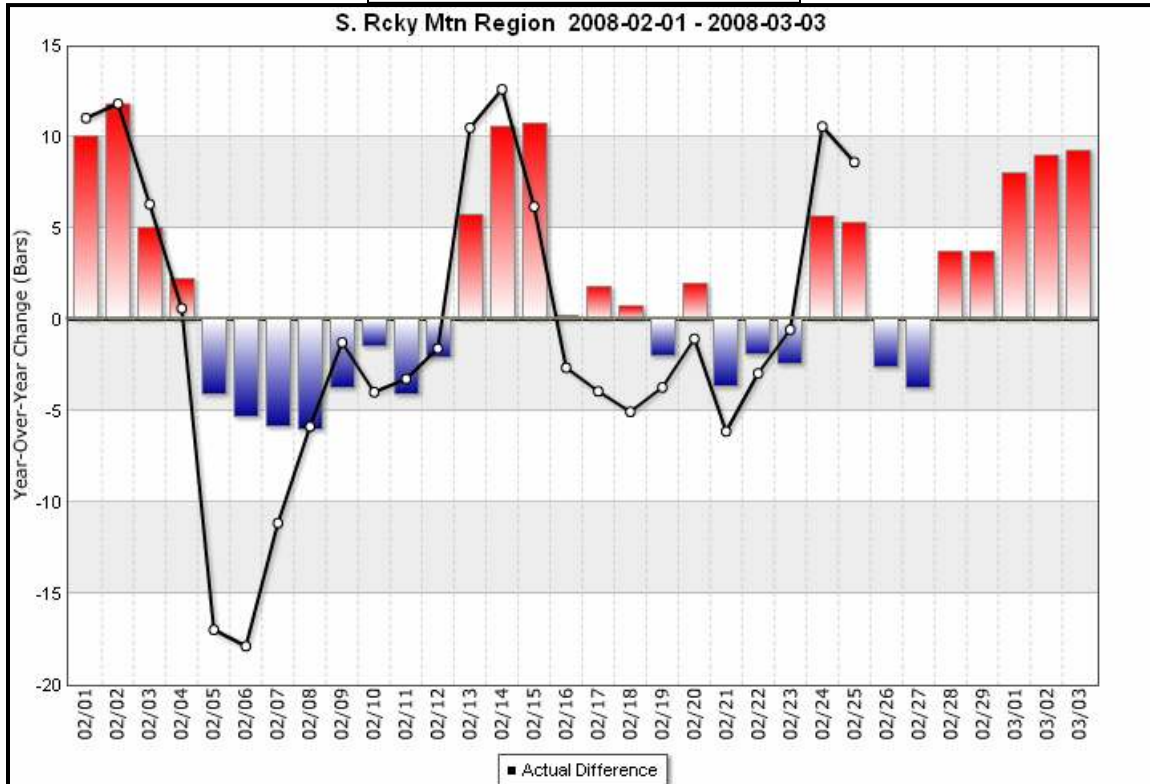
SOUTHEAST



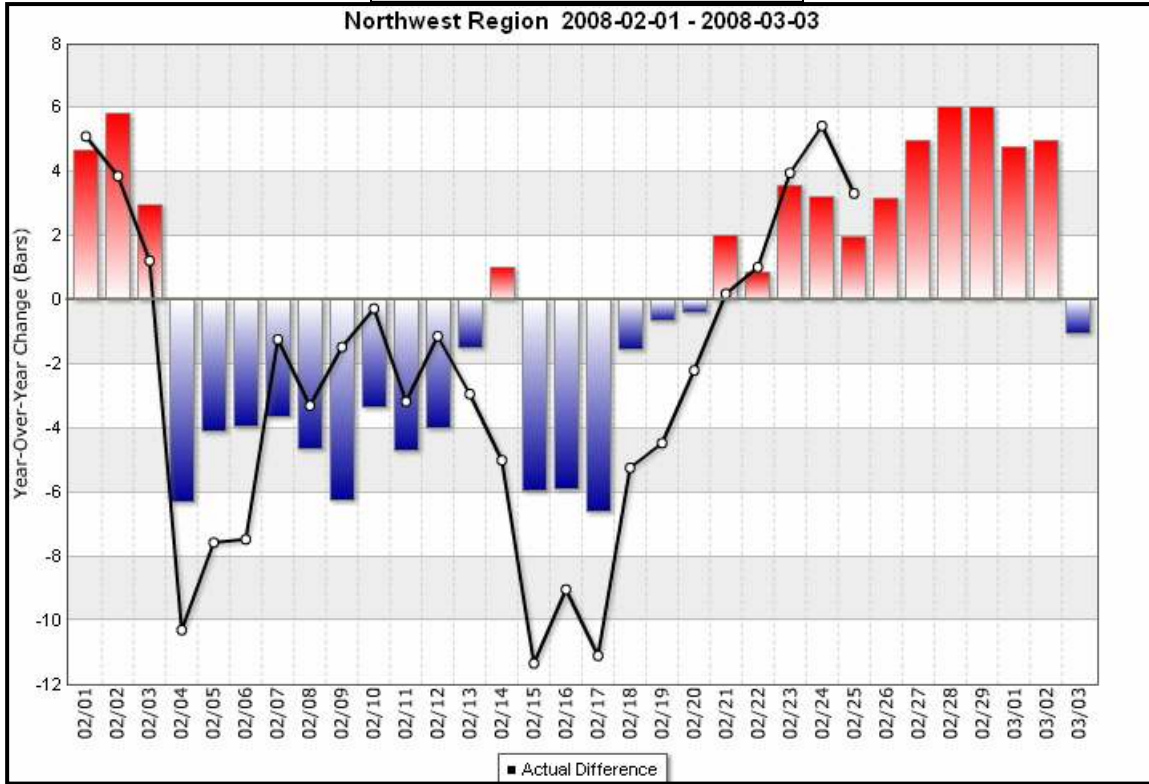
30 DAY TEMPERATURE SUMMARY  
NORTH CENTRAL



30 DAY TEMPERATURE SUMMARY  
SOUTHERN ROCKIES



30 DAY TEMPERATURE SUMMARY  
NORTHWEST



30 DAY TEMPERATURE SUMMARY  
SOUTHWEST

